

Telling the difference between bees and hoverflies



Bee or hoverfly ?



Learning
through
Landscapes



POLLI:NATION

Bee or Hoverfly ?



Photo credit- Julie Kendall



Learning
through
Landscapes


POLLI:NATION

Bee or hoverfly ?



Learning
through
Landscapes



Bee or hoverfly ?



Photo credit – Donna Rainey



Learning
through
Landscapes


POLLI:NATION

Bee or hoverfly ?



Learning
through
Landscapes


POLLI:NATION

Bee or hoverfly ?



Photo credit – Mark Smyth



Learning
through
Landscapes


POLLI:NATION

Bee or hoverfly?



Photo credit – Donna Rainey



Learning
through
Landscapes



Hoverflies

Big eyes on top Short Antenna



Learning
through
Landscapes


POLLI:NATION

Bees

Long eyes at side



Very long antennae



Learning
through
Landscapes


POLLI:NATION

Test your new skills

Hoverfly
sunglasses eyes



Make sunglasses eyes with
your hands
Make short antenna with your
fingers

Bee headphones
eyes



Make headphones eyes with
your hands
Make long antenna with your
arms



Learning
through
Landscapes


POLLI:NATION

Practice and a Quiz

Practice your skills by taking a fresh look at the pollinator pictures

Try out the written quiz to perfect your ID abilities

Test each other with your eyes/antennae actions



Antenna – Best method for Surveys

- The most useful method in the field
- Easy to spot
- Hard to get wrong



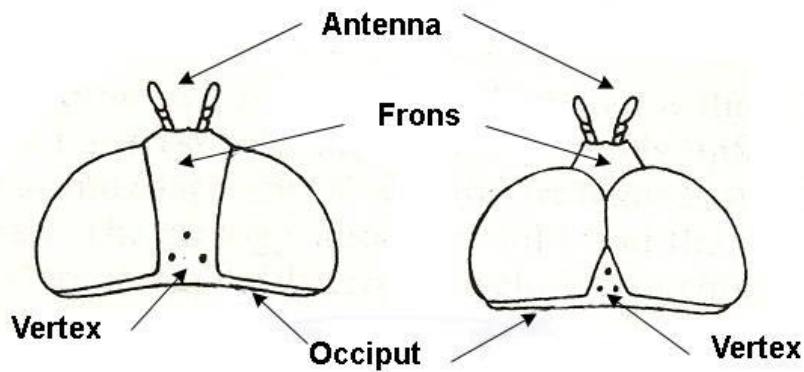
Learning
through
Landscapes



Advanced ID

Female hoverfly eyes

- Separated by frons
- Can extend down side of head



Female Eye (Left) Male Eye (Right)

Exception



Chrysotoxum cautum

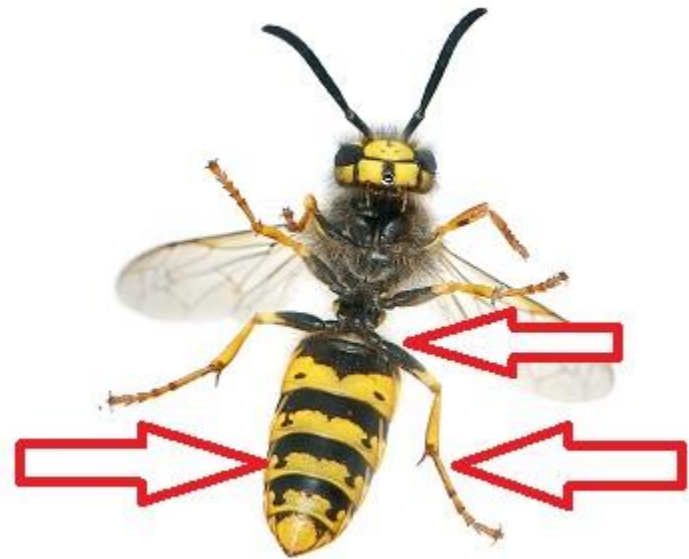
This hoverfly has long antennae but is a rare species

Wasps

Wasps also have long antennae so can be confused with bees

Look for

- Pinched in waist (waspish waist)
- Few hairs
- Lack of pollen baskets



Learning
through
Landscapes


POLLI:NATION

Partnership



Imperial College
London

UNIVERSITY of
STIRLING 

