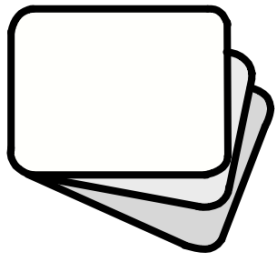


You are thinking about what you would like to do after Year 11.



These postcards can help you to learn more about what you can do next.

This resource was created by Hampshire County Council while taking part in Internships Work, a Department for Education funded programme.

Internships
WORK

Improving supported internship
provision in England.

Funded by



Delivered by



If you would like to speak to someone you can:



1. Speak to your **Careers Lead** in school. Their details will be on the school website.



2. Speak to a **Careers Adviser**. Your school can put you in touch with them.



3. **Contact National Careers Service** for more help and information:

0800 100 900 or visit their website to webchat: www.nationalcareers.service.gov.uk

A Levels

You can do A levels at college or sixth form. You can do these after your GCSEs. The subjects are like GCSEs but there are a lot more to choose from.

To do an A level I need:



5 GCSEs (4-9)

You need to have **English** and **Maths**.

Check the subject you want to study – different courses may ask for higher grades.

What A levels can I study?



You can choose **3** subjects.

It is important to choose subjects you find **interesting**, that you **like** and **enjoy**. They can be **new** subjects or subjects you learnt at school.

How will I learn?



Academic – this means I will learn in the **classroom**.



Reading
Writing
Asking and answering questions
Group discussions
Studying independently

A Levels

How will I be assessed?

Exams



A levels mean I could...



- Apply for university
- Do an apprenticeship
- Work

I can learn more information:



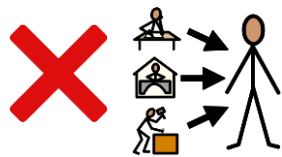
[Hampshire Futures](#)

[Career Pilot](#)

[National Careers Service](#)

Anything else I need to know?

There is **no work experience**.



A Levels take **2 years**.



Speak to a
careers adviser
to find out
more.

T Levels

You can do T levels at college or sixth form. You can do these after your GCSEs. If you know what industry (the type of job) you want to work in, T levels can help you learn the skills you need.

To do an T level I need:



5 GCSEs (4-9)

You need to have **English** and **Maths**.

Check the subject you want to study – different courses may ask for higher grades.

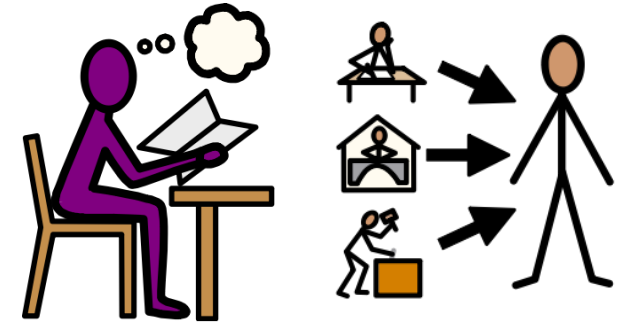
What T levels can I study?



You can choose **1** subject.

It is important to choose subjects you find **interesting**, that you **like** and **enjoy** and that you would like to do as a **job** when you leave education.

How will I learn?



Academic:– this means I will learn in the **classroom**.

AND

Work Based: this means I use my skills in the **workplace**.

T Levels

How will I be assessed?



Exams



Coursework- this is homework that you work on for weeks and months.



Work observations - watching me do the job

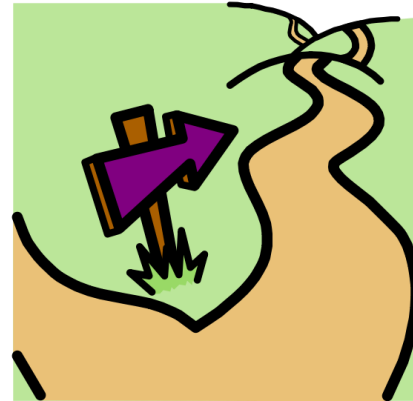
Anything else I need to know?

I do **not get paid** for my work placement. This is part of my college course.



T Levels take **2 years**,

T levels mean I could...



- Apply for university
- Do an apprenticeship
- Work

I can learn more information:



[T Levels](#)

[Hampshire Futures](#)

[Career Pilot](#)

[National Careers Service](#)



Speak to a careers adviser to find out more.

Technical and Vocational

You can do technical and vocational courses at college. You can do these after your GCSEs.
Technical and vocational courses can help you learn skills by being hands on and practicing.

To do a Technical and Vocational Course I need:



Entry Level ...
OR
GCSEs

Speak to your careers advisor to know what level you can start at.

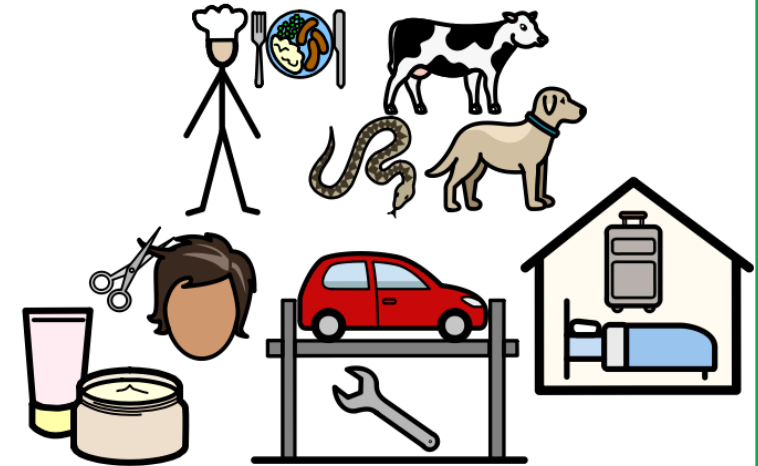
What Technical and Vocational Course can I study?



You can choose 1 subject.

It is important to choose subjects you find **interesting**, that you **like** and **enjoy** and that you would like to do as a **job** when you leave education.

How will I learn?



Practical and hands on: I learn by **doing**. I watch a **demonstration** and then **have a go**.

Technical and Vocational

How will I be assessed?

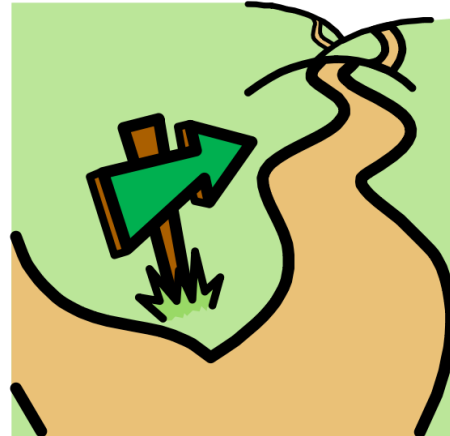


Observation- watching me do the job



Coursework- this is homework that you work on for weeks and months.

Technical and Vocational Courses mean I could...



- Do the next level of my course
- Apply for university
- Do an apprenticeship
- Work

I can learn more information:



[Hampshire Futures](#)

[Career Pilot](#)

[National Careers Service](#)

Anything else I need to know?

I learn at college not at the workplace.

It takes **1-2 years**

If you want to learn **more than one subject** talk to your careers advisor.

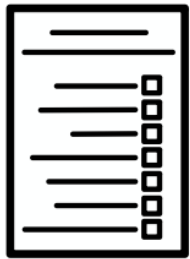


Speak to a careers adviser to find out more.

Apprenticeships

An apprenticeship is where you do a job but also learn at the same time and gain qualifications. You can do this after your GCSEs.

To do an Apprenticeship I need:



GCSEs
A job

My employer has said yes to having an apprentice.

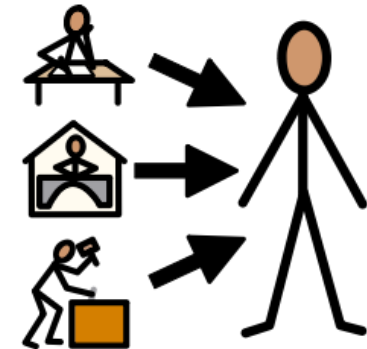
Speak to your careers adviser to know what level you can start at.

What apprenticeship can I study?



This will depend on my job.

How will I learn?



Practical and hands on
I learn at work from my colleagues
AND
I learn from a teacher

Apprenticeships

How will I be assessed?



Coursework- this is homework that you work on for weeks and months.

Anything else I need to know?

Most apprenticeships are **full time** this means you **work at least 30 hours a week.**

You get **paid.**



An Apprenticeship means I could...



- Apply for university
- Do a higher-level apprenticeship
- Work

I can learn more information:

[Become an Apprentice](#)

[Hampshire Futures](#)

[Career Pilot](#)

[National Careers Service](#)



Speak to a careers adviser to find out more.

Supported Internships

You can do a supported internship when you would like a job but aren't quite ready. It is an education course but you spend most of your time in the workplace. You can do this from the age of 16.

To do a Supported Internship I need:



An Education, Health & Care Plan (EHCP)

To be Age 16+ and finished Year 11

To want a paid job

What Supported Internship can I study?



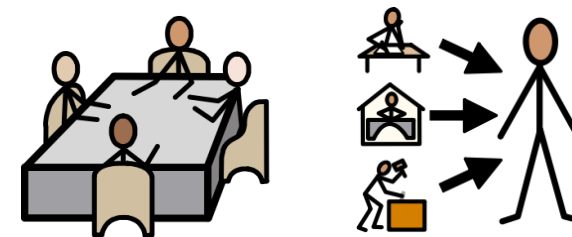
I will learn **maths, English and IT.**

I learn with a **tutor** in a **college or the community.**

This means a library, or a community centre.

I will do **work experience.**

How will I learn?



Supported learning:

A tutor will teach me as part of a small group.

AND

Work Based: this means I use my skills in the **workplace.**

Supported Internships

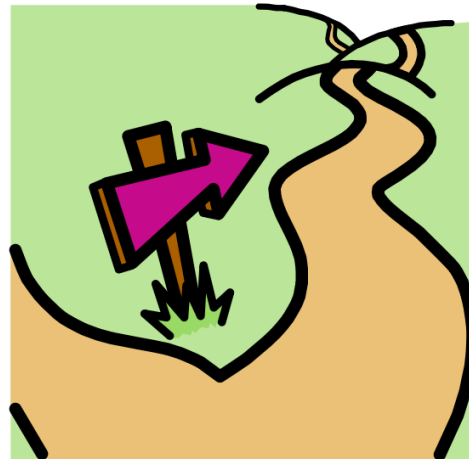
How will I be assessed?

I will need to speak to my **supported internship provider** to find out about assessment. Each provider may assess me differently.

Anything else I need to know?

I **choose** what **type of work experience** I would like to do and my provider helps me to find it.
It helps me move **from education into a job.**

A Supported Internship means I could...



- Do an apprenticeship
- Work

I can learn more information:

[Supported Internship](#)

[Hampshire Futures](#)

[Career Pilot](#)

[National Careers Service](#)



Speak to a careers adviser to find out more.