



Funded by  
UK Government

## Adult Tailored Learning

# ESOL Courses 2024 - 2025



Hampshire  
County Council

**SKILLS  
FOR LIFE**

# More Information



Hampshire County Council's Adult Tailored Learning offers a range of English courses for Speakers of Other Languages (**ESOL**).

The usual length of study on an ESOL course is 6 weeks and 100% attendance at all sessions is expected. We offer both **online** courses via MS Teams and **face to face** courses in community venues across the county.

Courses are available at various levels, from beginners to advanced, to help you improve your English language skills to support your children's learning, gain work, advance your career or prepare you for further academic or vocational study in the UK.

If you're looking to gain an accredited qualification, or simply develop your English skills, then we have a course for you!

These courses are **FREE** if you live in Hampshire and meet the residency eligibility criteria, are aged 19 and over and earn below the earnings threshold or unemployed.



Funded by  
UK Government

# ONLINE ESOL COURSES

## ONLINE ESOL – ENTRY 1 (A1)



This **free** online course is suitable for people whose English is at Entry 1 / Beginner Level e.g. people who can speak, read or write only a few words in English or maybe no English at all. You will learn to ask and answer questions, follow simple instructions and understand an explanation.

**Tutor:** Anna Winiarska

**Day:** Wednesday mornings

**Time:** 10.00 am to 12.00 noon (two hours online via MS Teams)

## ONLINE ESOL - ENTRY 2 (A1/A2)



This **free** online course is suitable for people who can have short conversations in English, and read and write simple text, but want to do more. It will help you talk, read and write about more interesting subjects and make fewer mistakes so people can understand you, you can understand them, and you can read and write messages, emails, forms and news stories.

**Tutor:** Anna Winiarska

**Day:** Friday mornings

**Time:** 10.00 am to 12.00 noon (Two hours online via MS Teams)



Funded by  
UK Government

## ONLINE ESOL - ENTRY 3 (A2/B1)



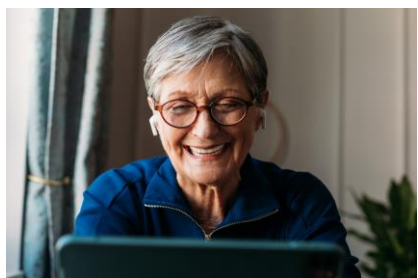
This **free** online course is suitable for people who are more confident about using everyday English but find it difficult to talk about more complicated topics and still make mistakes when speaking or writing English. This course will help you practise your speaking, listening, reading, and writing so you can understand people better, talk about most daily topics, read a simple news story, and write a long email or letter.

**Tutor:** Rekha Gupta

**Day:** Wednesday mornings

**Time:** 10.00 am to 12.00 noon (two hours online via MS Teams)

## ONLINE ESOL - LEVEL 1 (B1)



This **free** online course is suitable for people who are more confident using English and communicate quite easily in daily life, understand people, and can read and write about everyday subjects. This course will help you speak, read, and write about more complicated topics with greater accuracy. You will learn how to make a presentation, write formally and informally, and read about more challenging and interesting subjects.

**Tutor:** Sarah McHardy

**Day:** Wednesday mornings

**Time:** 10.00 am to 12.00 noon (two hours online via MS Teams)



Funded by  
UK Government

## FACE TO FACE ESOL COURSES



Our free face-to-face ESOL courses are held in community venues across Hampshire. We offer two levels of ESOL courses for beginners and intermediate.

There is an opportunity for learners to progress to additional courses including our **accredited ESOL course** with a formal assessment.

We also offer a range of online and face-to-face ESOL Progression Courses for intermediate to advanced level learners to develop your English skills further.

### FACE TO FACE ESOL FOR BEGINNERS - PRE-ENTRY / ENTRY 1 (AO/A1)



Our **free** face-to-face courses at Pre-Entry / Entry Level 1 are suitable for people who can speak, read or write only a few words in English and would like to develop their pronunciation, reading and writing skills. Our ESOL courses last six weeks and begin **at the start of each half term**. You will be taught in a small, supportive group by an experienced tutor at the following venues:

<b>Mondays</b>	Basingstoke Discovery Centre	1.00 pm – 3.00 pm
<b>Mondays</b>	Winchester, Holy Trinity Church	10.00 am – 12.00 noon
<b>Mondays</b>	Fareham Library	10.00 am – 12.00 noon
<b>Tuesdays</b>	Andover, The Bridge	10.00 am – 12.00 noon
<b>Tuesdays</b>	Aldershot Library	10.00 am – 12.00 noon
<b>Fridays</b>	Basingstoke Discovery Centre	1.00 pm – 3.00 pm



Funded by  
UK Government



## FACE TO FACE ESOL INTERMEDIATE - ENTRY 2 / 3 (A2/B1)



Our **free** face-to-face courses at Entry Level 2 / Entry Level 3 (A2 / B1) are for people who can have conversations in English, and read and write English text, but want to do more. This course will help you talk, read, and write about more interesting subjects and make fewer mistakes so people can understand you and you can understand them. You will be taught in a small, supportive group by an experienced ESOL tutor.

<b>Mondays</b>	Basingstoke Discovery Centre	10.00 am – 12.00 noon
<b>Mondays</b>	Winchester, Holy Trinity Church	1.00 pm – 3.00 pm
<b>Mondays</b>	Fareham Library	1.00 pm – 3.00 pm
<b>Tuesdays</b>	Aldershot Library	1.00 pm – 3.00 pm
<b>Tuesdays</b>	Andover, The Bridge	1.00 pm – 3.00 pm
<b>Fridays</b>	Basingstoke Discovery Centre	10.00 am – 12.00 noon

## NEW ACCREDITED ONLINE ESOL COURSE (READING) ENTRY 3



Our **FREE ONLINE** accredited ESOL course will start in the spring term 2024. This course is aimed at adults who would like to gain a formal ESOL qualification for work, study, or for personal development. The course will help you to speak, read, and write about more complicated topics with greater accuracy. You will learn how to make a presentation, write formally and informally, and read more

challenging and interesting subjects. Following this course there will be the opportunity to progress onto further accredited ESOL courses for Speaking & Listening and Writing.

<b>Tutor:</b>	Sarah McHardy
<b>Duration:</b>	Twelve weeks x 6 hours (two sessions a week)
<b>Venue:</b>	These courses will be delivered <b>online</b> via MS Teams
<b>Days:</b>	Tuesday and Thursday (you will need to attend both days)
<b>Times:</b>	09.30 am to 1.30 pm



Funded by  
UK Government

## ESOL – INTRODUCTION TO ENGLISH FOR DRIVING THEORY / FURTHER ENGLISH FOR DRIVING THEORY



If English is your second or other language and you are preparing for the UK Driving Theory Test then this **free** online course will help you to identify English vocabulary, signs and legislation for driving in the UK. You will also learn hazard awareness and carry out a practice driving theory test.

**Please note that you will need English skills at intermediate A2 / B1 or above to join this course.**

**Tutor:** Irina Nikitina

**Duration:** Six x two hour sessions

**Times:** 10.00 am – 12.00 noon (delivered **online** via MS Teams)

**Days:** Tuesday or Friday

## NEW ESOL – LIFE IN THE UK (PREPARING FOR UK CITIZENSHIP)



This series of **free** online courses are a perfect progression opportunity for ESOL learners to gain knowledge about life in the UK and help you to develop your English speaking and listening skills further. They cover the topics in the 'Life in the UK' Citizenship Test. **Please note that you will need English skills at intermediate to advanced level (B1+) to**

**join these courses.** Each topic lasts six weeks as an evening or daytime course.

- **Topic 1** - History of the UK & the Monarchy
- **Topic 2** - British Values, Principles & Citizenship
- **Topic 3** - British Customs & Traditions
- **Topic 4** - UK Government, Democracy & Law

**Tutor:** Irina Nikitina

**Duration:** Six weeks x two hour sessions

**Days:** Courses run on Wednesday evening or Friday afternoon

**Venue:** These courses will be delivered **online** via MS Teams



**Funded by  
UK Government**

## HOW DO I APPLY FOR A HAMPSHIRE ADULT TAILORED LEARNING ESOL COURSE?

For more information, course dates and eligibility criteria, email our team at:

[adult.learning@hants.gov.uk](mailto:adult.learning@hants.gov.uk)



Apply for a course today via our secure, online **application form**, or scan the QR code on your smartphone to go directly to the form:

[Hampshire Adult Tailored Learning ESOL Application Form](#)



For more information about our courses and eligibility criteria, please visit our **ESOL Webpage**:

[English for Speakers of other Languages \(ESOL\) | Education and learning | Hampshire County Council \(hants.gov.uk\)](#)

Searching for more ESOL courses in Hampshire is simple via our online **Course Finder Website**:

[Hampshire Adult Tailored Learning Course Directory](#)

\* Please note that course dates / venues shown in this flyer may be subject to change and may be cancelled if the course fails to meet the minimum enrolment number. You will be notified of the cancellation and an alternative course date or venue will be offered where possible.



Funded by  
UK Government